



Around the world, more than **1 MILLION** sexually transmitted infections are acquired every day.¹ The CDC estimates that nearly **20 MILLION** new sexually transmitted infections occur in the United States every year. Antibiotic Resistance, especially of sexually transmitted infections, is an urgent threat to not only this country's health but the entire world's.

The Effects of STIs

900+

infants were born with syphilis?

15-24

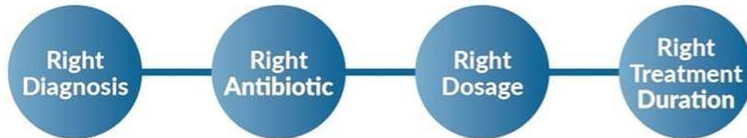
Adolescents and young adults ages 15-24 are at higher risk of acquiring an STI?

246,000+

More than 246,000 of gonorrhea cases are resistant to antibiotics.*

Drug Resistance

When diagnosed with an STI, antibiotics are usually prescribed to cure the infection. STIs are generally curable but the misuse and overuse of antibiotics has caused strains of these infections to become resistant. Gonorrhea is the second most commonly reported infectious disease and there is now only 1 recommended effective class of antibiotics to treat it. **What can we do about it?**



Fast, Accurate, Reliable Results

Ensuring patients receive proper and effective treatment.

Providing accurate detection of pathogen using real-time PCR technology.

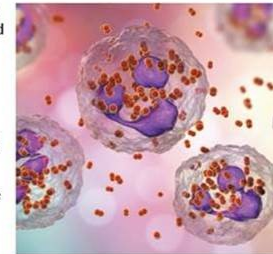
Delivering easy to interpret test results within 24 hours.

STI Panel
<i>Atopobium vaginiae</i>
<i>Chlamydia trachomatis</i>
<i>Gardnerella vaginalis</i>
<i>Haemophilus ducreyi</i>
HHV-1 (Herpes Simplex)
HHV-2 (Herpes Simplex)
<i>Neisseria gonorrhoeae</i>
<i>Treponema pallidum</i>
<i>Trichomonas vaginalis</i>

We provide a highly accurate, comprehensive and rapid testing solution to correctly identify infectious pathogens through the use of very sensitive and specific real-time PCR assays.

Streamlined Process

- 1 Collect a patient specimen.
- 2 Send the specimen to our lab via overnight shipping or courier.
- 3 The specimen arrives in our lab and results will be ready in one day.
- 4 Results are delivered on a one page summary that provides answers to most questions, without having to review pages of data.



This test detects the presence of pathogen only and does not detect disease. Clinically correlate results for significance.

References:

1. "Sexually Transmitted Infections (STIs)." World Health Organization, World Health Organization, [www.who.int/en/news-room/fact-sheets/detail/sexually-transmitted-infections-\(stis\)](http://www.who.int/en/news-room/fact-sheets/detail/sexually-transmitted-infections-(stis)).
2. "Sexually Transmitted Disease Surveillance 2017." Centers for Disease Control and Prevention, 24 July 2018, www.cdc.gov/std/stats17/toc.htm.
3. "Statistics | American Sexual Health Association: Your Source For Sexual Health Information, www.ashsexualhealth.org/stdstis/statistics/.
4. "Antibiotic Resistance Threats in the United States, 2013." U.S. Department of Health and Human Services & Centers for Disease Control and Prevention, 23 April 2013, <https://www.cdc.gov/drugresistance/threat-report-2013/pdf/ar-threats-2013-508.pdf>.